



Day 2...
Earth/Environmental Science
Ms. Williams

When I call your name:

1) Turn in your signed syllabus

2) Turn in the following materials:

1 composition book with your name on it!
4 Glue Sticks

3) Return to your seat

Review Classroom Rules

1. Bellwork- Something to do as soon as you walk in!
2. NO Cellphones
3. Do NOT talk while teacher is talking
4. Do NOT talk while another student is asking a question
5. Do NOT get up and chat with students at other tables
6. Do NOT disrespect: Me, yourself, your classmates
7. **Keep your head up- No sleeping!!!!**

CELLPHONE GRAVEYARD



Leaving Class!

Don't stand up or pack up until I say so

Clean desk and pack survival kit before you leave the table

Check for homework on the white board

4th period -Chairs on top of table when the announcements end.

Homework Reminder

- My website is the most useful tool for class resources.

williamsee.weebly.com

You are responsible for keeping up with assignments
and working on time management skills!

- **Late work:** students have 1 day to turn in work for a reduced grade:
 - 1 day late = 25% off grade
 - 2 days late = 50% for the assignment
 - 3 days late = 0% for the assignment

**More Policies & Procedures
Please!!!**

Starting Class

- Be in your seat when the bell rings
- Quietly complete your bellwork assignment
- Be sure you have your I.S.N. with you
- No talking for the first 5 minutes! (not even to me!)

Can I get out of my seat?

- Throwing away garbage, sharpening pencil, etc =only when we are between activities (ask first!).
 - Do not get up and roam around during a lesson or activity!

...when in doubt, ask first!

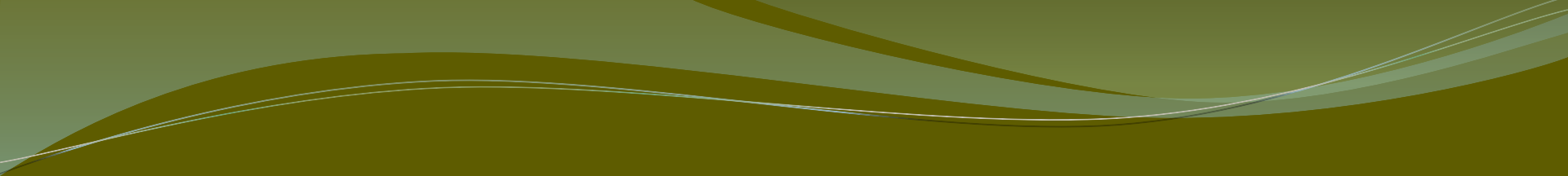
Computers/iPads

- Network Account – all students need an active NHCS network account username and password. *Please see me if you do not have one or don't know what it is.*
- iPads/Computers– Using school equipment is a privilege. Any abuse or neglect will result in a technology probation.
- Everyone will be assigned an iPad/Computer number. Write it down once you receive your assigned number!

Technology

- We will use the following almost everyday
 - Discovery Education
 - Google Classroom
 - NHCS Student Email Account
- Please let me know *ASAP* if you do not have access to the internet outside of school!

Are you nervous or stressed?



Day 3:
The Interactive Science Notebook

**Who Are
You?**

The Multiple Intelligences (MI) Chart

Verbal/linguistic intelligence

- using language to present your ideas, to express your feelings or to persuade others

Logical/mathematical intelligence

- reasoning, logical thinking; handling mathematical problems

Visual/spatial intelligence

- creating and interpreting visual images; thinking in three dimensions

Bodily/kinesthetic intelligence

- feeling and expressing things physically; doing hands-on work

Musical/rhythmic intelligence

- creating and feeling a rhythm to express a mood; detecting and analysing musical themes

Intrapersonal intelligence

(within the self)

- understanding your own interior thoughts and feelings in a very clear way

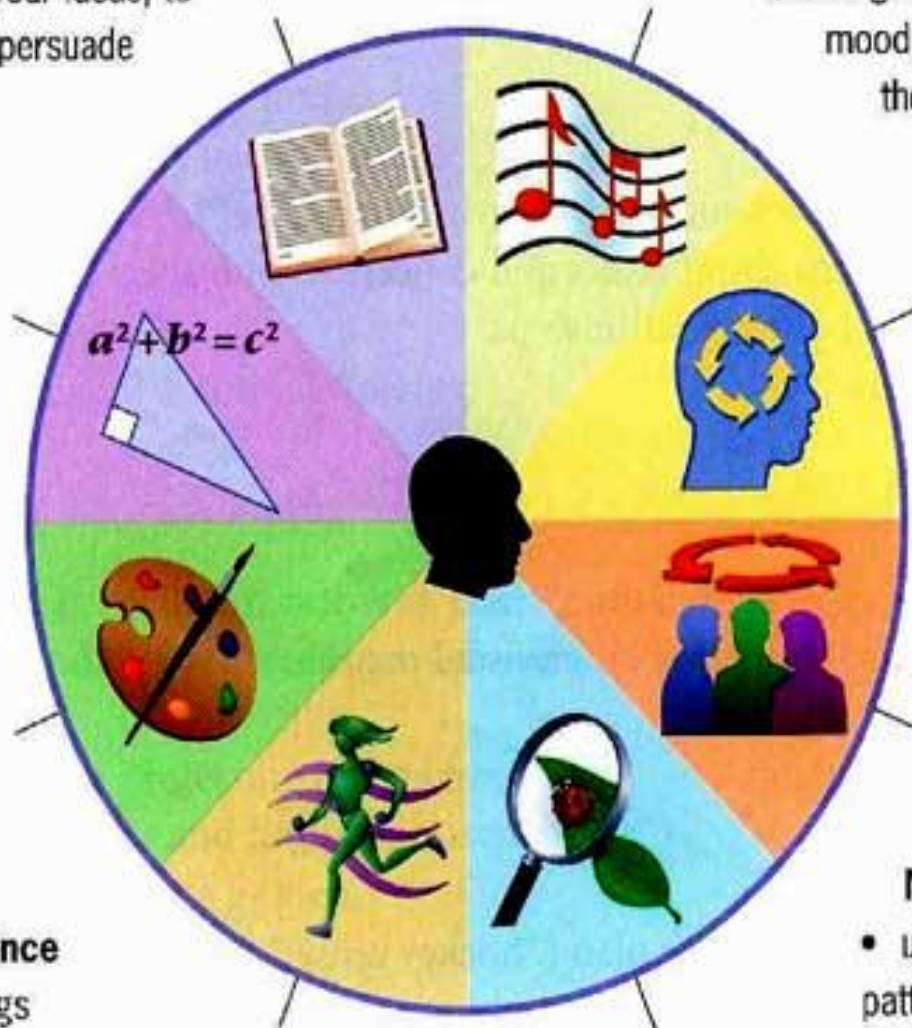
Interpersonal intelligence

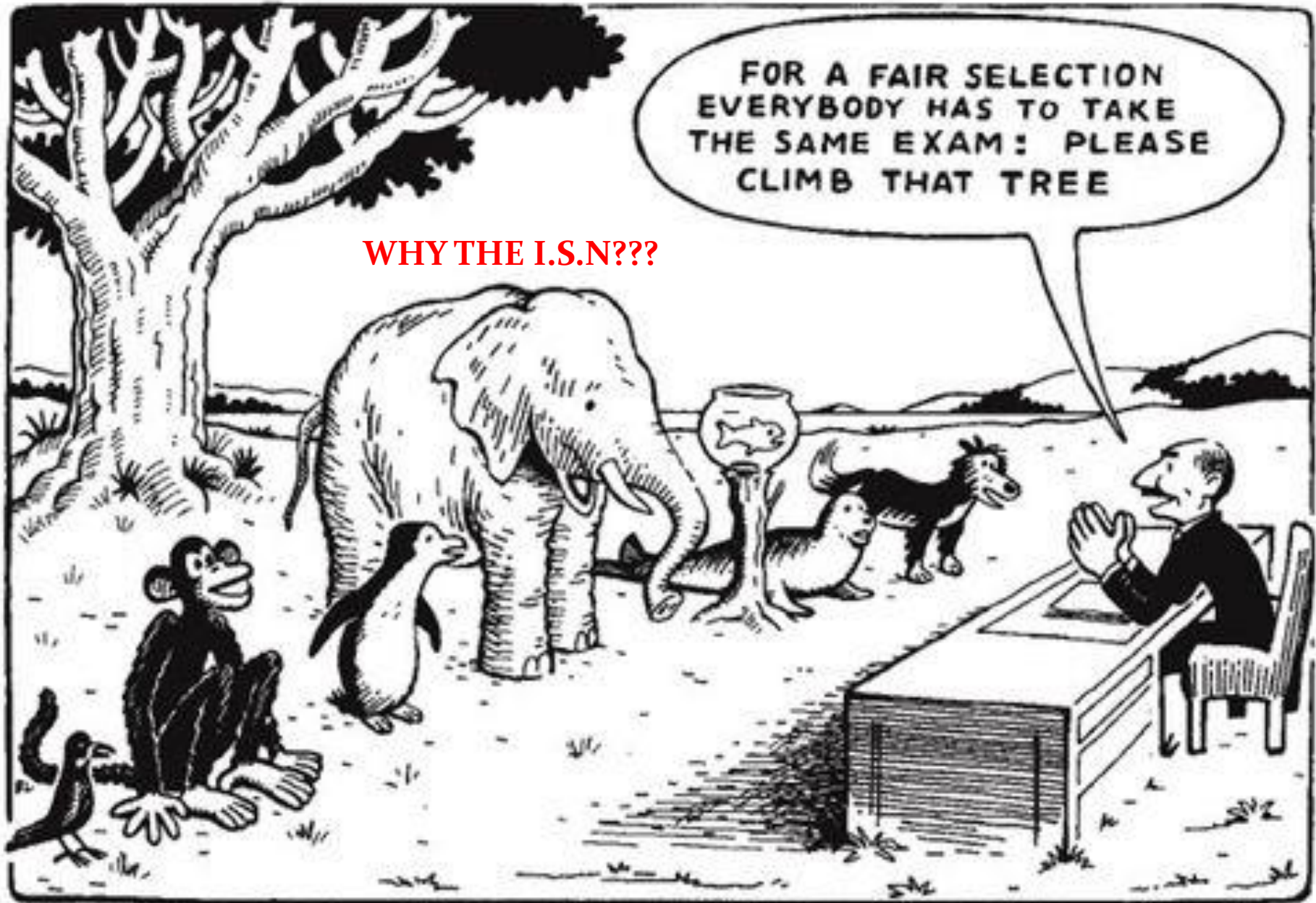
(between people)

- understanding the feelings, needs and purposes of others

Naturalist intelligence

- understanding nature, seeing patterns in the way nature works; classifying things





WHY THE I.S.N???

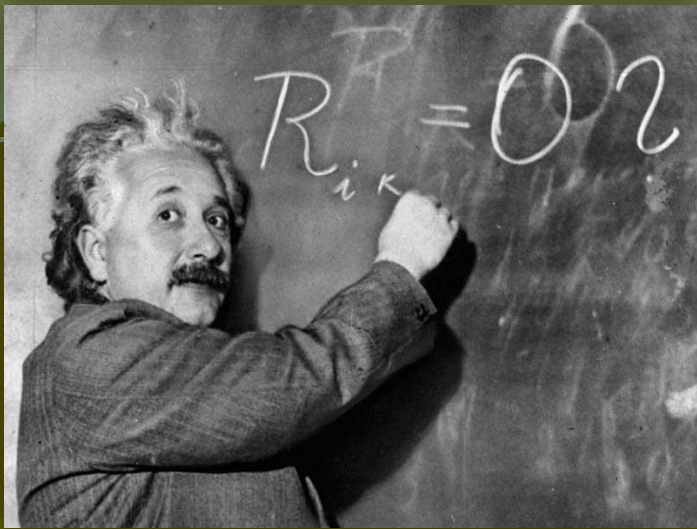
What is an ISN?

Interactive Science Notebook

- Improves your
 - organization skills
 - critical thinking skills
 - classroom concentration
- Expresses your understanding creatively
- Improves the ways you learn vocabulary
- Honors your multiple intelligences

The Power of the I.S.N.

It uses BOTH sides of your brain!



The RIGHT Side a.k.a. **Teacher** Input

What goes on the right side?

- *Thrilling* lecture notes 😊
- Video notes or questions
- Lab procedures/instructions
- Teacher/content questions
 - Readings
- Examples/Demonstrations

The LEFT Side

a.k.a. **Student** Output

What goes on the left side?

- Homework assignments
- Lab results, answers, graphs
- Reading Strategy Assignments
- Processing Task Assignments
- Drawings, diagrams, illustrations
- Any/all creative assignments



Rules of the right side

- Every page must start with a **title and date**
- Page numbers are always **odd**
- Each page will be graded **classwork grades**

“The stuff that’s **RIGHT**
because the **TEACHER**
said so!”



Rules of the left side

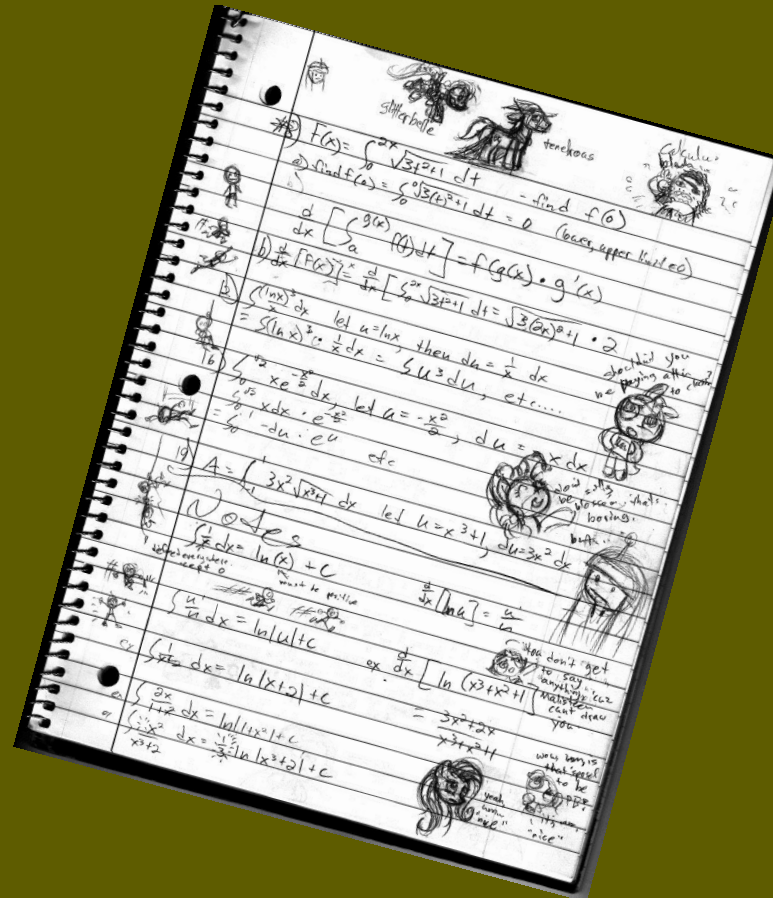
- Use color as often as possible!
- Page numbers are always **even**
- Each page will be graded
→ **homework grades**

“The stuff that LEFT the STUDENT’S brain!”



DAY 4 : Building the ISN

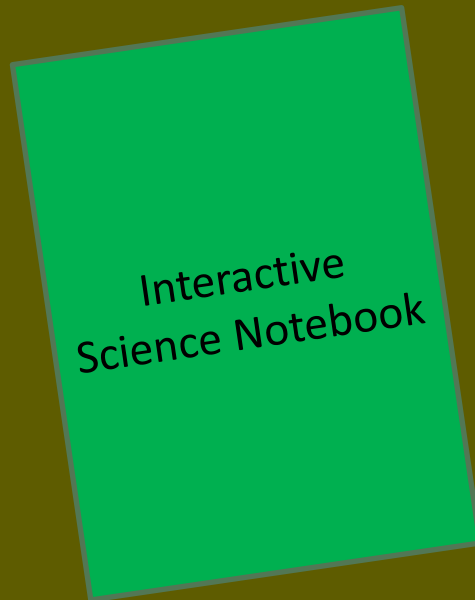
Interactive
Science
Notebook



-
1. Open your composition book- we will now build the reference section
 2. Page Numbering: Starting with the first blank page as page #1, number your pages front and back from 1-12
 3. Stop after numbering page #12

• Build the Reference Section

- Glue the green title sheet to page 1
- Glue the Table of contents to page 2
- Glue your syllabus to page 3



Interactive Notebook

Everything we've done so far
will be used as the
REFERENCE SECTION.

Page #	Page Contents	Page #	Page Contents
		1	ISN Cover Page
2	ISN Table of Contents	3	Course Paperwork
4	Processing Tasks	5	Reading Strategies
6	Prefix/Suffix List	7	Metric Measurement
8	Graphing	9	Scientific Method
10	Latitude & Longitude	11	Topography
12	Chemistry	13	Current Event Project
14	Unit 1 Progress Report	15	Unit 1 Current Event
16	Unit 2 Progress Report	17	Unit 2 Current Event
18	Unit 3 Progress Report	19	Unit 3 Current Event
20	Unit 4 Progress Report	21	Unit 4 Current Event
22	Unit 5 Progress Report	23	Unit 5 Current Event
24	Unit 6 Progress Report	25	Unit 6 Current Event

Interactive Science
Notebook

*Optimus
Prime*

Interactive Notebook

Now we will build

UNIT 1 in our

Interactive Notebook

Interactive Notebook

Page Numbering: Starting with the first blank page as page #1, number your pages front and back from 1-20

I.S.N. Unit 1 Cover Page

- Locate the Unit 1 cover page
- This is the beginning of your actual Interactive Science Notebook.
- Write in your name & class period.
- (We will fill in important due dates later!)

Earth/Environmental Science
Interactive Science Notebook
Mrs. Canup - Room 417

Unit 1
EARTH
IN THE
UNIVERSE

Name _____

Period _____

Due Date _____

Other important due dates:

I.S.N. Unit 1 Cover Page

- Label Page #2 as PING PLANNING
- Glue the Table of Contents to Page #3
- Glue the Daily Bellwork to Page #4
- Label Page #5 as Exit Tickets

You have now completed the construction of your first I.S.N!!!

So, what's the point of this thing???

Watch a couple of video clips...

[Multiple
Intelligences](#)

[Monkey
Business](#)

[Science
Misconceptions](#)

[Are you right
brained or left
brained?](#)

Final I.S.N. Reminders...

- Update your Table of Contents EVERY day...as soon as the bell rings to start class!
- NEVER leave a page blank...EVEN IF YOU ARE ABSENT! You are required to make up all missed pages (including bellwork!)
- Glue your pages in EVERY day! ALL handouts must be glued/taped in. No staples!
- DO NOT remove any pages from your notebook. You will turn them all in together at the end of the unit!
- You *MAY* want your own coloring supplies and/or scotch tape (optional).

